

MONACO COMPONENTS, INC.

BUILT-IN DRIVE STYLE PCB MOUNTING

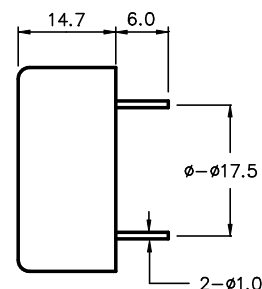
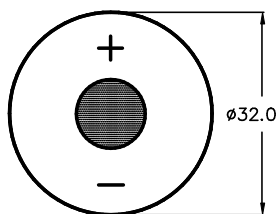
**2000
series**

- High sound output.
- High efficiency.
- Low current drain.

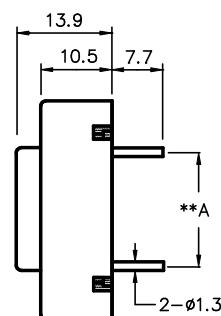
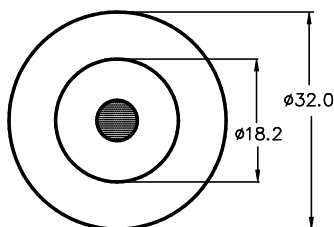
MODEL	MPB-2304	MPB-2306	MPA-2310	MPA-2312
FREQUENCY *	3500 HZ ± 500 Hz		2000 HZ ± 500 Hz	
DRIVING CIRCUIT	BUILT IN			
OPERATING VOLTAGE	3 - 28 V	3 - 20 V	3 - 30 V	
RATED VOLTAGE	12 V			
SOUND PRESSURE *	82 dB MIN. @ 30 cm	93 dB MIN. @ 30 cm	90 dB @ 50 cm	
CURRENT CONSUMPTION *	4 mA MAX.	10 mA MAX.	10 mA	
tone	CONTINUOUS			
CONNECTION STYLE	PCB MOUNT (PINS)		PCB MOUNT (PINS) : 15.0	PCB MOUNT (PINS) : 17.5
OPERATING TEMPERATURE	-20° to +60° C		-40° to +120° C	

* VALUES AT RATED VOLTAGE

MPB-2304
MPB-2306



MPA-2310
MPA-2312



COLOR : WHITE
POLYCARBONATE HOUSING MATERIAL

ALL DIMENSIONS IN mm

(**A: SEE CONNECTION STYLE
FOR ϕ - ϕ PIN SPACING)

SPECIFICATIONS SUBJECT TO CHANGE WITHOUT NOTIFICATION / MODELS SHOWN SUBJECT TO LIMITED WARRANTY

SALES OFFICE (516)-767-6644

CORPORATE OFFICE

P.O. Box 575, Scotch Plains, NJ. 07076

Phone: (908)-322-2977 Fax: (908)-322-2358

E-mail: info@monacocomponents.com

www.monacocomponents.com