

MONACO COMPONENTS, INC.

BUILT-IN DRIVE STYLE PCB MOUNTING

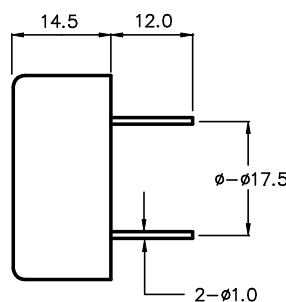
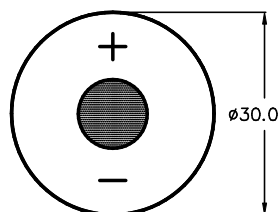
**2000
series**

- High sound output
- High efficiency
- Low current drain

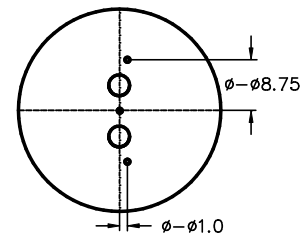
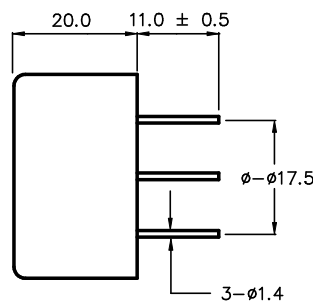
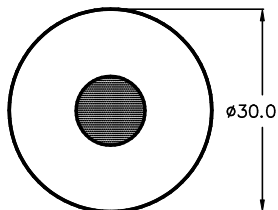
MODEL	MPB-2314	MPB-2316	MPF-2320
FREQUENCY *	2700 HZ ± 500 Hz		3500 HZ ± 500 Hz
DRIVING CIRCUIT	BUILT IN		
OPERATING VOLTAGE	3 - 20 V		1.5 - 15 V
RATED VOLTAGE	12 V		
SOUND PRESSURE *	71 dB MIN. @ 30 cm	98 dB MIN. @ 30 cm	80 dBA MIN. @ 30 cm
CURRENT CONSUMPTION *	5 mA MAX.	8 mA MAX.	2.5 mA MAX.
TONE	CONTINUOUS		DUAL
CONNECTION STYLE	PCB MOUNT (PINS)		
OPERATING TEMPERATURE	-20° to +60° C		-25° to +55° C

* VALUES AT RATED VOLTAGE

MPB-2314
MPB-2316



MPF-2320



ALL DIMENSIONS IN mm

SPECIFICATIONS SUBJECT TO CHANGE WITHOUT NOTIFICATION / MODELS SHOWN SUBJECT TO LIMITED WARRANTY

SALES OFFICE (516)-767-6644

CORPORATE OFFICE

P.O. Box 575, Scotch Plains, NJ. 07076

Phone: (908)-322-2977 Fax: (908)-322-2358

E-mail: info@monacocomponents.com

www.monacocomponents.com