

# MONACO COMPONENTS, INC.

EXTERNAL DRIVE STYLE      PCB MOUNTING

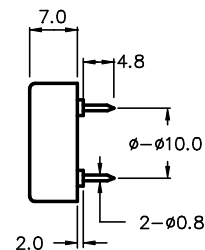
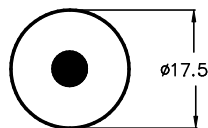
**4000  
series**

- Small size and lightweight.
- High efficiency.
- Low power consumption.

MODEL	MPB-4110
RESONANT FREQUENCY	4100 Hz $\pm$ 500 Hz
OPERATING VOLTAGE	20 V <sub>p-p</sub> MAX.
RATED VOLTAGE	10 V <sub>p-p</sub> SQUAREWAVE
CAPACITANCE	10000 $\pm$ 30% pF
DRIVE CIRCUIT	EXTERNAL
SOUND PRESSURE *	85 dB MIN. @ 10 cm @ 4000 Hz
CURRENT CONSUMPTION *	6 mA MAX.
-tone	DEPENDENT ON DRIVE CIRCUIT USED
CONNECTION STYLE	PCB MOUNT (PINS)
OPERATING TEMPERATURE	-20° to +60° C

\* VALUES AT RATED VOLTAGE

MPB-4110



ALL DIMENSIONS IN mm

SPECIFICATIONS SUBJECT TO CHANGE WITHOUT NOTIFICATION / MODELS SHOWN SUBJECT TO LIMITED WARRANTY

**SALES OFFICE (516)-767-6644**

**CORPORATE OFFICE**

P.O. Box 575, Scotch Plains, NJ. 07076

Phone: (908)-322-2977 Fax: (908)-322-2358

E-mail: [info@monacocomponents.com](mailto:info@monacocomponents.com)

[www.monacocomponents.com](http://www.monacocomponents.com)