

MONACO COMPONENTS, INC.

BUILT-IN DRIVE STYLE ELECTRO-MAGNETIC

8000 series

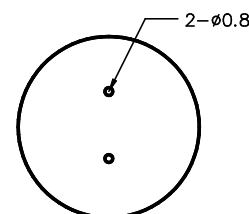
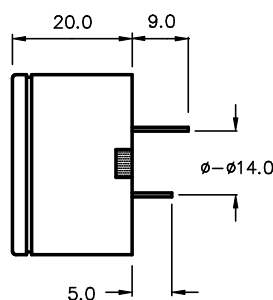
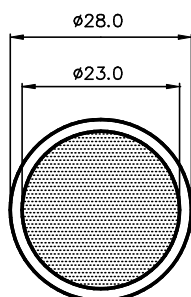
- Variety of tone types and sound output levels.
- Available with either pins or wire leads.
- Wide range of operating voltages.

| MODEL | MMF-8200 | MMF-8202 | MMF-8204 | MMF-8206 | MMF-8208 |
|-----------------------|-----------------------|-----------------------|-----------------------|-----------------------|-----------------------|
| FREQUENCY * | 2800 Hz \pm 200 Hz | | | | |
| DRIVING CIRCUIT | BUILT IN | | | | |
| OPERATING VOLTAGE | 1 - 3 VDC | 2 - 5 VDC | 2 - 5 VDC | 4 - 9 VDC | 4 - 9 VDC |
| RATED VOLTAGE | 1.5 VDC | 3 VDC | 3 VDC | 6 VDC | 6 VDC |
| SOUND PRESSURE ** | 70 dB MIN. @ 30 cm | 85 dB MIN. @ 30 cm | 73 dB MIN. @ 30 cm | 90 dB MIN. @ 30 cm | 78 dB MIN. @ 30 cm |
| RATED CURRENT * | 5 mA MAX. | 35 mA MAX. | 8 mA MAX. | 35 mA MAX. | 10 mA MAX. |
| TONE *** | PULSE | SINGLE | PULSE | SINGLE | PULSE |
| CONNECTION STYLE | PCB MOUNT (PINS) | | | | |
| OPERATING TEMPERATURE | -20° to +60° C | | | | |

* VALUES AT RATED VOLTAGE

** VALUES AT RATED VOLTAGE, MINIMUM dB @ 30 cm

MMF-8200
MMF-8202
MMF-8204
MMF-8206
MMF-8208



THE PULSE TONE EMITS 2 TO 7 Hz AT RATED VOLTAGE

ALL DIMENSIONS IN mm

SPECIFICATIONS SUBJECT TO CHANGE WITHOUT NOTIFICATION / MODELS SHOWN SUBJECT TO LIMITED WARRANTY

SALES OFFICE (516)-767-6644

CORPORATE OFFICE

P.O. Box 575, Scotch Plains, NJ. 07076

Phone: (908)-322-2977 Fax: (908)-322-2358

E-mail: info@monacocomponents.com

www.monacocomponents.com