

MONACO COMPONENTS, INC.

BUILT-IN DRIVE STYLE ELECTRO-MAGNETIC

8000 series

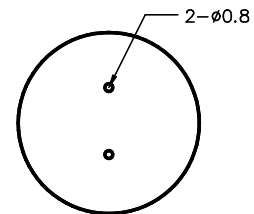
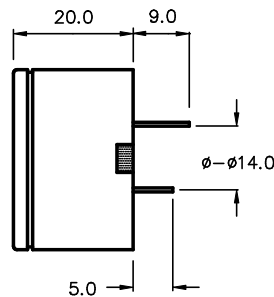
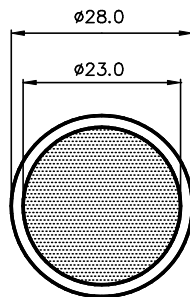
- Variety of tone types and sound output levels.
- Available with either pins or wire leads.
- Wide range of operating voltages.

MODEL	MMF-8220	MMF-8222	MMF-8224	MMF-8226	MMF-8228
FREQUENCY *	2800 Hz \pm 200 Hz				
DRIVING CIRCUIT	BUILT IN				
OPERATING VOLTAGE	4 - 15 VDC	8 - 15 VDC	8 - 15 VDC	15 - 28 VDC	15 - 28 VDC
RATED VOLTAGE	12 VDC	12 VDC	12 VDC	24 VDC	24 VDC
SOUND PRESSURE **	90 dB MIN. @ 30 cm	85 dB MIN. @ 30 cm	90/80 dB MIN. @ 30 cm	95 dB MIN. @ 30 cm	85 dB MIN. @ 30 cm
RATED CURRENT *	15 mA MAX.	15 mA MAX.	40/15 mA MAX.	25 mA MAX.	20 mA MAX.
tone ***	SINGLE	PULSE	SINGLE/PULSE	SINGLE	PULSE
CONNECTION STYLE	PCB MOUNT (PINS)				
OPERATING TEMPERATURE	-20° to +60° C				

* VALUES AT RATED VOLTAGE

** VALUES AT RATED VOLTAGE, MINIMUM dB @ 30 cm

MMF-8220
MMF-8222
MMF-8224
MMF-8226
MMF-8228



THE PULSE TONE EMITS 2 TO 7 Hz AT RATED VOLTAGE

ALL DIMENSIONS IN mm

SPECIFICATIONS SUBJECT TO CHANGE WITHOUT NOTIFICATION / MODELS SHOWN SUBJECT TO LIMITED WARRANTY

SALES OFFICE (516)-767-6644

CORPORATE OFFICE

P.O. Box 575, Scotch Plains, NJ. 07076

Phone: (908)-322-2977 Fax: (908)-322-2358

E-mail: info@monacocomponents.com

www.monacocomponents.com